



GRIGONOVA CHEMISTOP

Gel barrier against capillary rising for any type of wall

Product description

CHEMISTOP is a hydrophobic gel based on silane monomer ideal to create barriers against capillary rising in any masonry. The gel's consistency and the absence of solvents make the application of CHEMISTOP very easy, definitive and safe, with a very low environmental impact.

The active ingredients of CHEMISTOP penetrate inside, react with the silica present in the masonry and begin to create a hydrophobic barrier that expands and blocks the rising water without compromising the breathability of the wall.

Properties

- It is a definitive solution for any type of wall
- It is essential to solving humidity problems
- Penetrates quickly, preventing water and salts from rising.
- Easy, quick with safe application
- Solvent free
- Water based

The data reported refer to Quality Control tests under normalized environmental conditions. Construction site applications, depending on the operating conditions, can detect significantly modified data, therefore the information present in the Data Sheet has a purely indicative value as the user must always verify its suitability for using the product, assuming the responsibility deriving from its use. Fornaci Calce Grigolin SPA reserves the right to make technical modifications of any kind without any prior notice. Due to the chemical-physical variables that influence the operating principle (saline saturation of macropores), it is not possible to predict the duration of the healing action over time.

CHEMISTOP

Supply and storage

CHEMISTOP can be supplied in two different formats:

- boxes of 12 280 cc cartridges, with 4 spouts and 4 tubes
- boxes of 12 600cc aluminum bags, with 2 spouts and 2 tubes

CHEMISTOP maintains its properties for at least 12 months when preserved with integral packages and at temperatures between 5 °C and 35° C.

Fields of use

CHEMISTOP has been designed to create barriers against capillary rising in a very simple, fast and safe way on any type of masonry (concrete, brick, tuff, perforated, stone or mixed, cellular concrete).

The consistency of CHEMISTOP makes the calculation of the consumption (and of the relative cost) easy for any type of intervention and it greatly simplifies the intervention.

Support preparation

General considerations

Before applying the product, proceed with the complete removal of old degraded paints and plasters, up to the raw support. Then check the type of masonry present.

Do not inject CHEMISTOP in the presence of decohesive and inconsistent masonry; Pre-fill and seal any cracks and discontinuities present on the wall facing using products such as PALLADIO BM 55, RINFORZA NHL M10, RINFORZA NHL M15 or GALILEO MURATURA. Then proceed filling the present cavities by injection of superfluid boyacs such as PALLADIO INIEZIONE NHL.

Also check for the absence of cables and pipes inside the support, possibly proceeding with preliminary tracing in order to mark its position.

Making the holes

On the first available joint with respect to the internal walking surface, drill 12 mm holes every 10 cm. The holes must be made along the entire masonry affected by the humidity problem starting, where possible, 50 cm before and 50 cm after the identified area.

The hole must have the depth of the wall minus 5 cm (so for 20 cm masonry the depth will be 15 cm).

For brick, block or stone masonry with regular joints, make holes horizontally in mortar courses with a pitch not exceeding 10 cm.

For masonry composed of stones, stones, with irregular joints, drill holes in the mortar courses following a more linear trend possible, possibly reducing their pitch and considering injecting them on two consecutive courses, breaking their position to recreate a closed grid with alternating holes.

Clean the holes of dust with compressed air, in order to remove dust and residues of loose material.

Application

Product preparation

For both available formats, the product is ready to use.

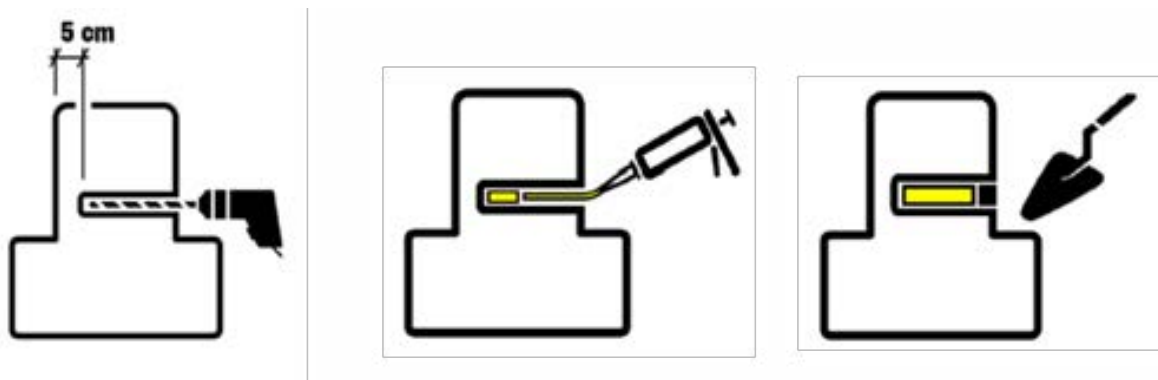
- In the case of a product in 280 cc cartridges, dispensing can take place via a classic 280 ml dosing gun, after installing the appropriate spout accompanied by the tube to facilitate precise deep application.

CHEMISTOP

- In the case of a product in 600 cc bags, dispensing can take place using a specific pistol such as a CHEMISTOP 600 CC DOSING PISTOL, after installing the appropriate spout accompanied by the tube to facilitate precise deep application and the sealing gasket.

Product injection

Inject CHEMISTOP gel with the appropriate dosing gun (depending on the format chosen) starting from the bottom of the hole and slowly moving back, until the holes are completely filled, taking care to leave the space necessary for the subsequent closing of the hole with mortar, for a thickness greater than or equal to 2 cm. Therefore, proceed with grouting the holes with mortar, using products such as PALLADIO BM 55, RINFORZA NHL M10, RINFORZA NHL M15 or GALILEO MURATURA.



Warnings

It is recommended not to apply CHEMISTOP in frozen masonry and/or with temperatures below 5°C. After use of the aluminium cartridge or bag, CHEMISTOP should be used within 24 hours. If subsequent plastering is planned with specific remediation products from the PALLADIO or GRIGONOVA product line by Fornaci Calce Grigolin Spa, approximately wait at least 1 week after the chemical barrier is created, in order to promote the evaporation of moisture present in the area above the area where the intervention was carried out. In any case, evaluate on a case-by-case basis, based on the situation.

The indications contained in this technical sheet are indicative, general and non-binding, do not constitute an intervention specifications and do not replace the design phases in any way.

Safety instructions

CHEMISTOP is not considered hazardous under current mixture regulations.

In any case, it is recommended to read the instructions on the packages and refer to the relevant safety data sheet. It is also recommended to store out of the reach of children, not to eat or drink during use; Wear gloves and glasses and avoid contact with eyes and skin.

Take normal precautions for using chemicals.

CHEMISTOP

TECHNICAL DATA	PERFORMANCE
Consumption* Full bricks or compact walls, tuff, cellular concrete	To make 1 ml of intervention (consumption) – (280 cc cartridges) – (600 cc bags)
Sp. 20 cm	(224 cc) - (0,8 pz) – (0,38 pz)
Sp. 25 cm	(280 cc) - (1,0 pz) – (0,47 pz)
Sp. 30 cm	(364 cc) – (1,3 pz) – (0,61 pz)
Sp. 35 cm	(420 cc) – (1,5 pz) – (0,70 pz)
Sp. 40 cm	(504 cc) – (1,8 pz) – (0,84 pz)
Sp. 45 cm	(560 cc) – (2,0 pz) – (0,94 pz)
Sp. 50 cm	(644 cc) – (2,3 pz) – (1,08 pz)
Consumption* Mixed stone and bricks	To make 1 ml of intervention (consumption) – (280 cc cartridges) – (600 cc bags)
Sp. 20 cm	(280 cc) – (1,0 pz) – (0,47 pz)
Sp. 25 cm	(336 cc) – (1,2 pz) – (0,56 pz)
Sp. 30 cm	(348 cc) – (1,6 pz) – (0,58 pz)
Sp. 35 cm	(504 cc) – (1,8 pz) – (0,84 pz)
Sp. 40 cm	(616 cc) – (2,2 pz) – (1,03 pz)
Sp. 45 cm	(672 cc) – (2,4 pz) – (1,12 pz)
Sp. 50 cm	(784 cc) – (2,8 pz) – (1,31 pz)
Consumption* Stone	To make 1 ml of intervention (consumption) – (280 cc cartridges) – (600 cc bags)
Sp. 20 cm	(308 cc) – (1,1 pz) – (0,52 pz)
Sp. 25 cm	(364 cc) – (1,3 pz) – (0,61 pz)
Sp. 30 cm	(504 cc) – (1,8 pz) – (0,84 pz)
Sp. 35 cm	(560 cc) – (2,0 pz) – (0,94 pz)
Sp. 40 cm	(672 cc) – (2,4 pz) – (1,12 pz)
Sp. 45 cm	(756 cc) – (2,7 pz) – (1,26 pz)
Sp. 50 cm	(868 cc) – (3,1 pz) – (1,45 pz)

**These data are the result of laboratory tests and could be significantly modified by the installation conditions; in particular, in the case of loose masonry with large voids, consumption could exceed what was declared.*

The data reported refer to Quality Control tests under normalized environmental conditions, depending on the operating conditions, can detect significantly modified data, therefore the information present in the Data Sheet has a purely indicative value as the user must always verify its suitability for using the product, assuming the responsibility deriving from its use. Fornaci Calce Grigolin SPA reserves the right to make technical modifications of any kind without any prior notice. Due to the chemical-physical variables that influence the operating principle (saline saturation of macropores), it is not possible to predict the duration of the healing action over time.

CHEMISTOP

TECHNICAL DATA	PERFORMANCE
Color	white
Consistency	gel
Specific weight	0,98 g/cm ³
PH	7 - 8
Packaging (box)	nr. 12 280 cc cartridges, with 4 spouts and 4 tubes
Confezione (scatola)	nr. 12 600cc aluminum bags, with 2 spouts and 2 tubes
Storage at ideal temperature	12 months
Ideal storage temperature	+ 5°C - + 25°C

v. 01/2025
marketed product

The data reported refer to Quality Control tests under normalized environmental conditions. Construction site applications, depending on the operating conditions, can detect significantly modified data, therefore the information present in the Data Sheet has a purely indicative value as the user must always verify its suitability for using the product, assuming the responsibility deriving from its use. Fornaci Calce Grigolin SPA reserves the right to make technical modifications of any kind without any prior notice. Due to the chemical-physical variables that influence the operating principle (saline saturation of macropores), it is not possible to predict the duration of the healing action over time.